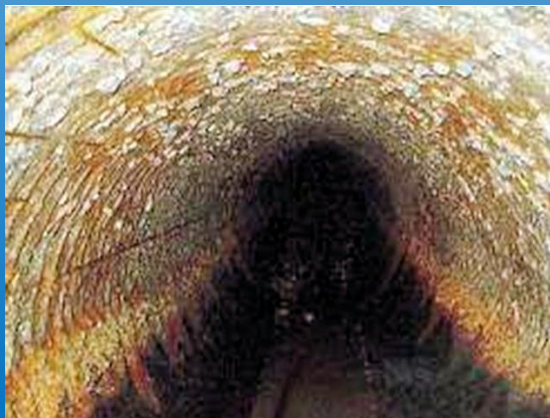




## **Admixture to Create Sulfuric Acid Resistance Concrete**

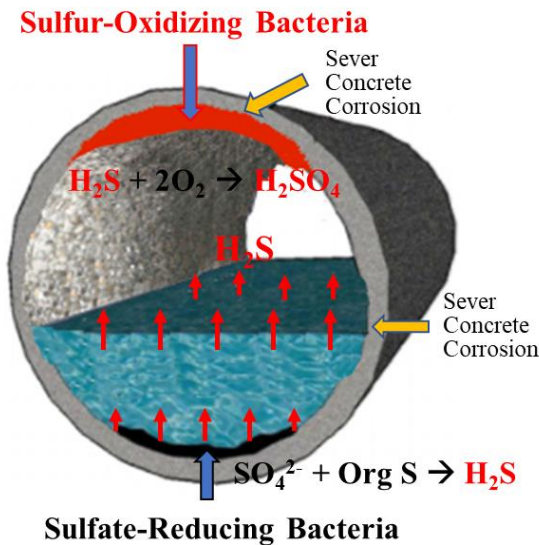


## What is SuperBio Admixture?

SuperBio is liquid additive precisely dosed during the mixing phase to perform consistently, safely and effectively in each specific mix design. Other design properties are unaffected by adding SuperBio.

It is a unique solution designed to stop the concrete corrosion by bacteria before it begins. Incorporated into the concrete mix is a highly charged cationic polymer that is dosed directly into the concrete at the time of production.

When bacteria come into contact with concrete that has been fortified with SuperBio, their cell structure will rupture, killing the bacteria. The cell rupture is caused by exchanging a biostatic charge.



## Features

**LONG TERM PROTECTION** - It is not consumed, it does not dissipate and it does not produce toxic metabolites. Since it is not a surface treatment, it cannot wash off, chip off, delaminate, or disbond. The protection is permanent and lasts just as long as the concrete.

**INTERNAL PROTECTION** - Since it is fully incorporated into the concrete mix and is molecularly bonded to its ingredients, it lasts as long as the concrete. SuperBio is not a surface treatment; it is throughout the entire thickness of the pipe, manhole or structural lining.

**COST EFFECTIVE** - SuperBio costs less to install than coatings or linings since it is precision metered into the mix. Expensive field applications, testing, and repairs are eliminated.

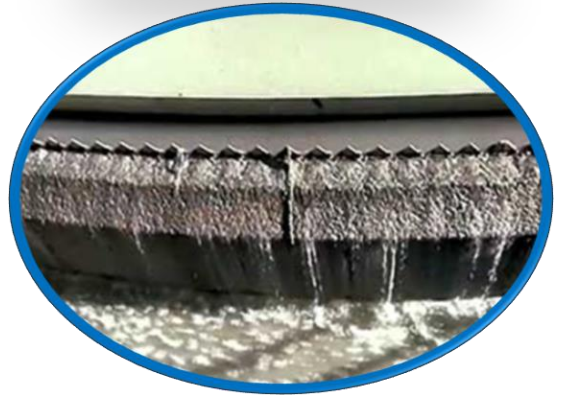
**PROVEN PERFORMANCE** - Over 20 years used in concrete, SuperBio has provided long-term concrete corrosion protection. Product Performance with little degradation up to 190° C.

**QUALITY CONTROL** - SuperBio is available through the certified precast concrete pipe and manhole producers, ready-mix suppliers, and rehabilitation specialists.

**ENVIRONMENT** - Essentially Non-toxic, Water based. Contains no Phenols, Tin, Heavy metals, Lead, Mercury or Formaldehyde. It is safe to handle and it leaves no environmental residue.

## Applications

- New precast concrete pipe and manholes
- Wet wells.
- Clarifiers and similar cast-in-place structures by ready-mix producers.



## Physical Properties

Physical State:

Pale yellow or light blue, slightly viscous liquid at 25 °C

pH:

Approx. 5

Specific Gravity:

1.0g/ml @ 20°C

Density:

8.48 lbs per gallon





**USA, Hong Kong, Thailand**



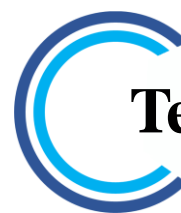
Contact:

[www.mui-int.com](http://www.mui-int.com)

Email: [info@mui-int.com](mailto:info@mui-int.com)



**Quality Services**



**Technologies**



**Innovations**



**Creative**